



ImpactCap: For Recruiting, Roster, and Scouting Decisions

Data That Wins:

One system for evaluation, performance, and roster decisions

 **IMPACTCAP**

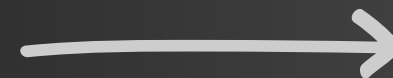
POWERED BY DSA LABS

Current Challenges:

Football data has made decision making more complex, not more organized.

Today's staffs are managing:

- High school recruiting
- Transfer portal recruiting
- Roster management
- NIL + budget considerations
- Opposition scouting



Result

- Fragmented information
- Manual workflows
- Decision friction
- Missed opportunities
- Expensive mistakes

All across disconnected systems.

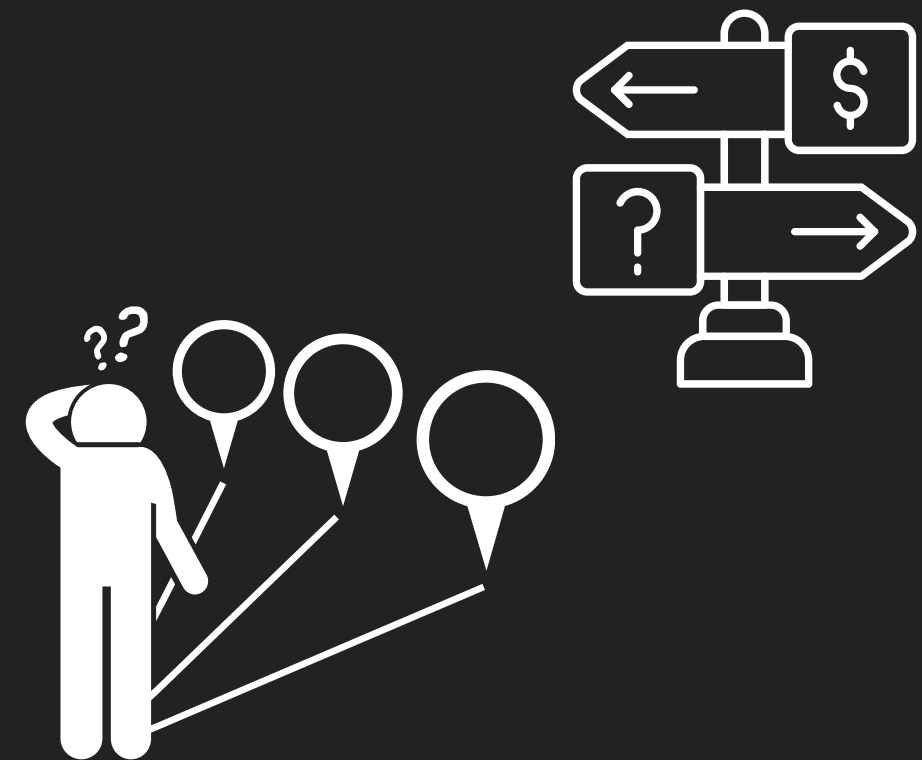
What's Actually Broken?

The issue isn't data collection. It's aggregating all of the data to make actionable decisions.

Most staffs:

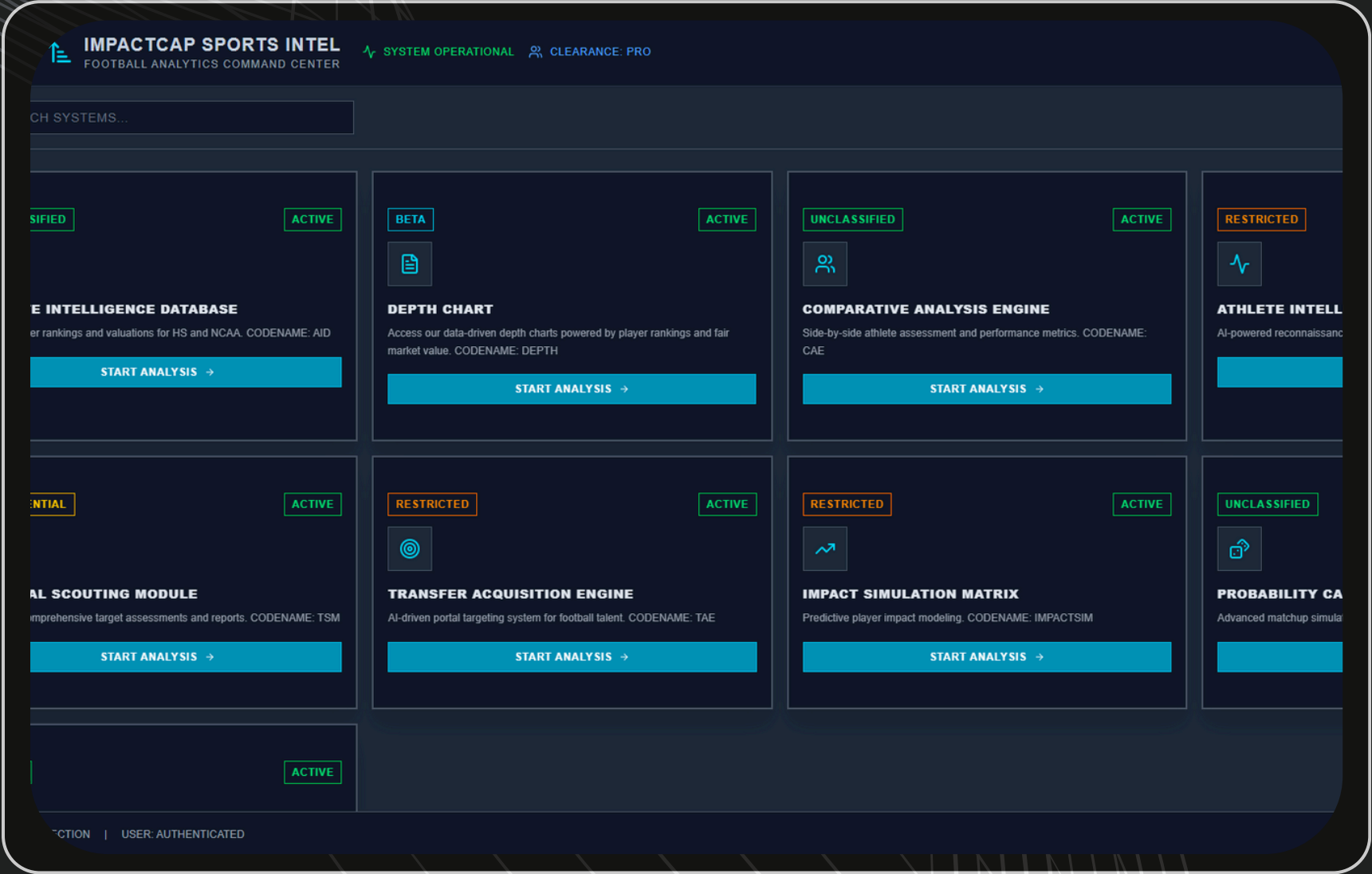
- Use 3-5 separate tools to gather and store data
- Still rely on manual workflows
- Struggle to compare players at scale
- Lose clarity with the surplus of data collected

Data exists. Clarity does not.



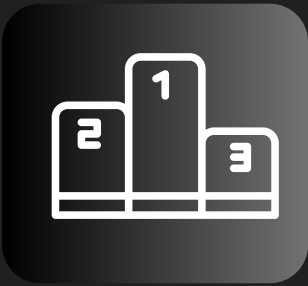
Solution: ImpactCap

ImpactCap consolidates recruiting, roster evaluation, and scouting into one decision-support platform.



Centralize Player Information

Surface what matters most without digging through excess data



Impact Rankings

Instantly measure player impact across key performance categories



Roster and Budget Context

Make decisions with full roster and financial awareness



Opponent Scouting

Clear opponent insight for faster game prep

Rankings Table

Standardized player rankings across all levels of football

EXIT

IMPACTCAP SPORTS INTEL
FOOTBALL PLAYER INTELLIGENCE DATABASE

SYSTEM OPERATIONAL

2256 RECORDS

CLEARANCE: PRO

SEARCH INTELLIGENCE DATABASE...

DATA STREAM ACTIVE ANALYSIS ENGINE ONLINE

NAME	TRANSFER S...	TRANSFER TO	HEIGHT	WEIGHT	DSA IMPACT ...	CUSTOM WEI...	DSA FAIR MA...
Ethan Westloski	COMMITTED	Oklahoma State	6'1"	234	0.815	0.844	\$840,375
Ian Strong	COMMITTED	California	6'3"	211	0.798	0.801	\$643,592
Trey Lathan	ENTERED	?	6'1"	228	0.783	0.796	\$692,854
Chris Lofton	ENTERED	?	6'0"	180	0.779	0.863	\$85,893
Tre Richardson	ENTERED	?	5'10"	175	0.778	0.776	\$562,775
Brody Foley	COMMITTED	Louisville	6'6"	260	0.772	0.805	\$249,902
Billy Gowers	COMMITTED	Indiana	6'1"	205	0.77	0.82	\$19,723
Jackson Harris	COMMITTED	LSU	6'3"	205	0.77	0.82	\$542,395
Taron Dickens	ENTERED	?	5'11"	180	0.77	0.862	\$147,832
Donte Lee Jr.	COMMITTED	Texas Tech	6'3"	185	0.768	0.829	\$536,720
Wyatt Young	COMMITTED	Oklahoma State	6'0"	195	0.761	0.795	\$512,902
Thaddeus Gian...	ENTERED	?	6'2"	240	0.759	0.817	\$137,514
Rasheem Biles	ENTERED	?	6'1"	220	0.758	0.778	\$585,077
Marcus Neal Jr.	COMMITTED	Penn State	6'1"	215	0.755	0.769	\$403,211
Owen Chambliss	COMMITTED	Nebraska	6'3"	230	0.754	0.806	\$579,558
Demond Willia...	ENTERED	?	5'11"	190	0.753	0.756	\$883,939
Adam Moham...	COMMITTED	California	6'0"	220	0.752	0.755	\$351,386
Braden Pegan	COMMITTED	Utah	6'3"	210	0.749	0.802	\$478,769
Drew Mestema...	COMMITTED	Oklahoma State	6'4"	211	0.748	0.783	\$861,003
Lorenzo Fenner	COMMITTED	Cincinnati	6'0"	185	0.747	0.821	\$70,423
Hollywood Sm...	COMMITTED	Alabama	5'11"	195	0.745	0.768	\$337,240
Vondraquis L...	ENTERED	?	6'0"	195	0.743	0.783	\$463,688

PREVIOUSNEXT

DSA Impact Ranking

Compare players across FBS, FCS, JUCO, HS, and NCAA Transfer Portal. 300+ metrics roll up into one, easy to understand score.

Custom Weighing

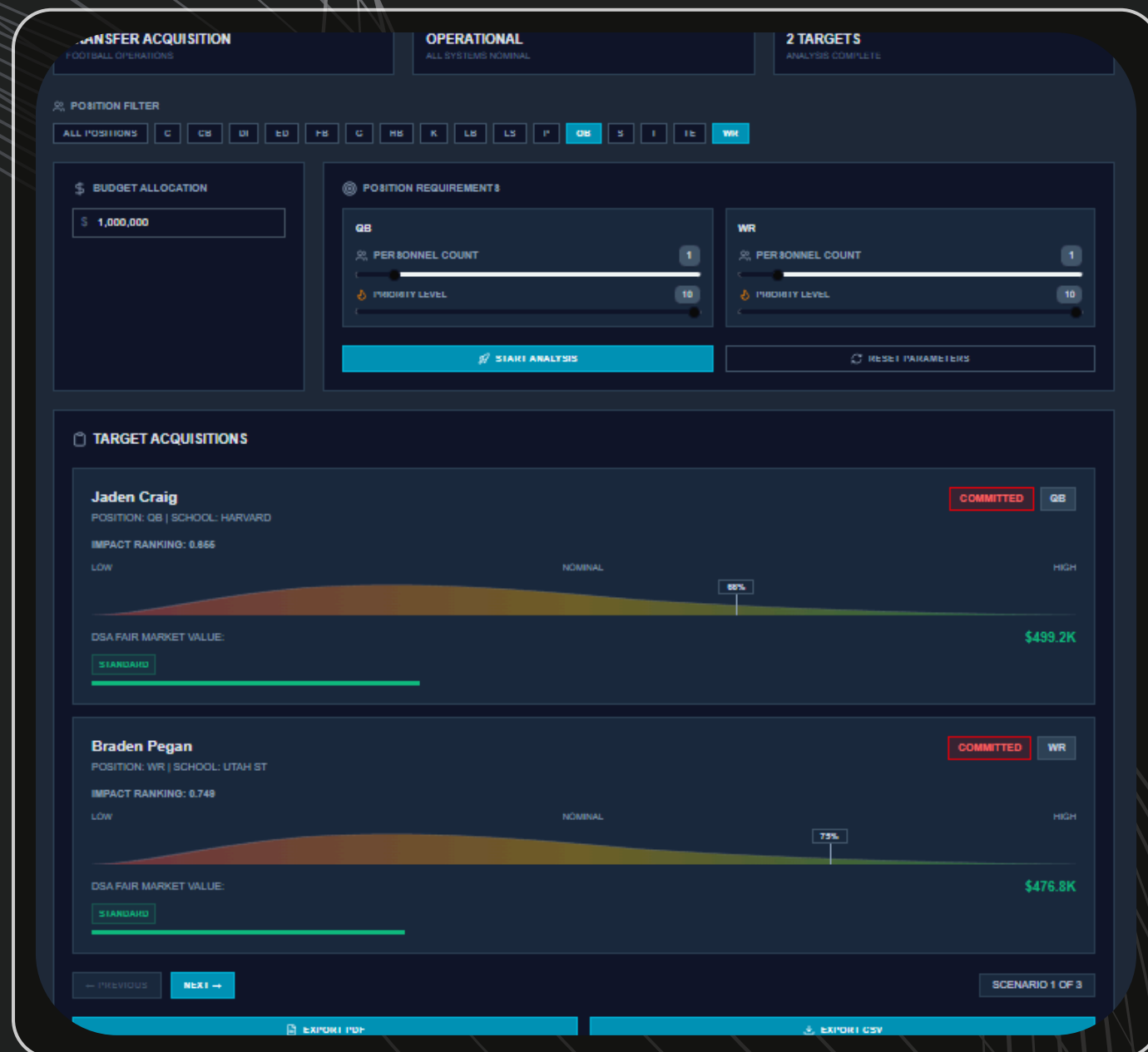
Filter by position, role, and what evaluation criteria is most important to you.

Updated Real-Time

Automated and scalable analysis. Updated within milliseconds of new data submissions.

Transfer Acquisition

Surface the best-fit players across every recruiting pool



Customize Your Search

Input your budget, position, and importance to find your perfect fit instantly

Streamline Workflow

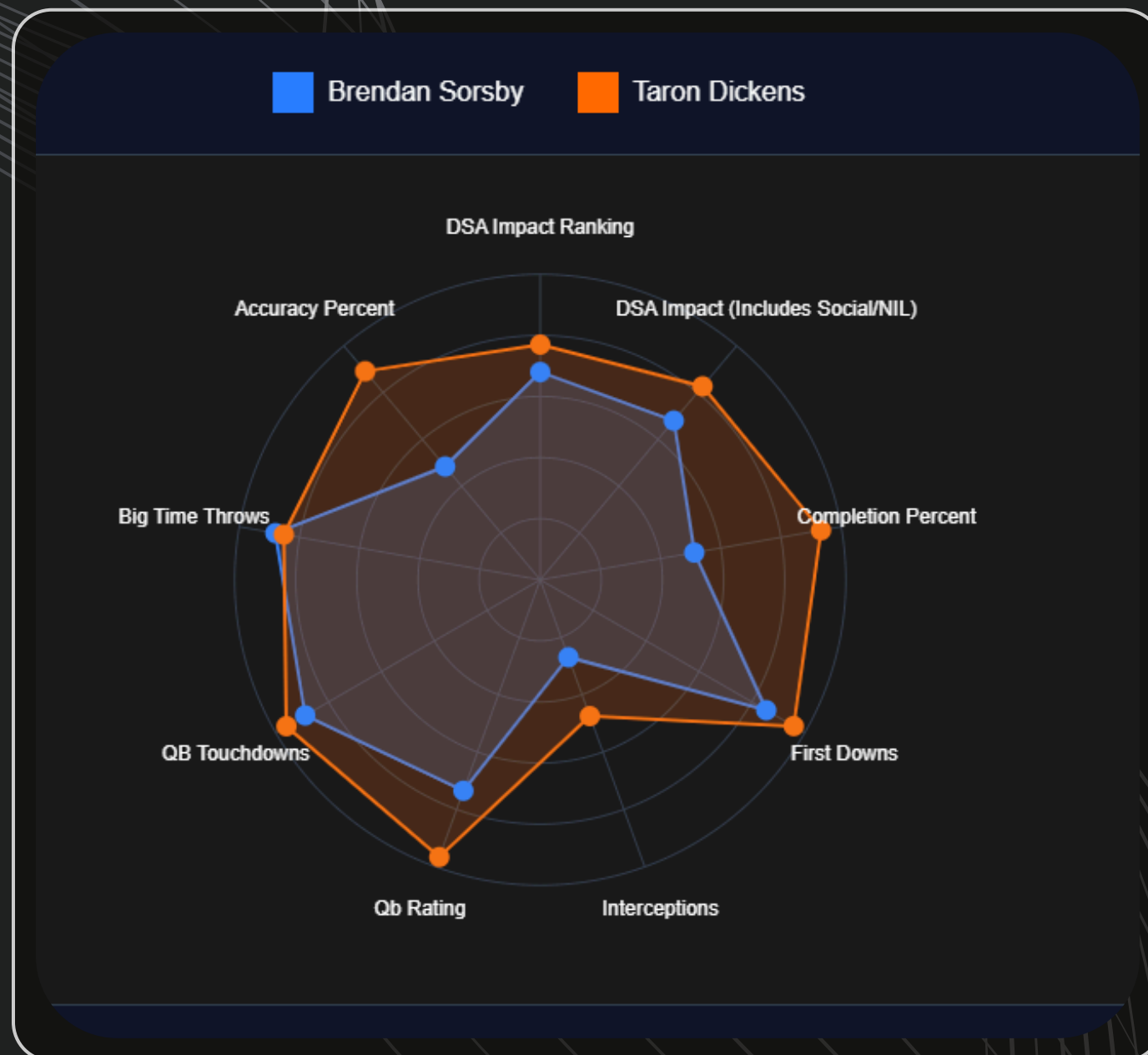
Reduce time spent sorting through large player pools, and focus staff attention on the right targets first

Alternative Recommendations

Context aware alternatives you can trust

Comparative Analysis

See clearly whether a decision adds or loses value



01

Side-by-side
comparisons

02

Evaluate players
within the same role,
position, and context

03

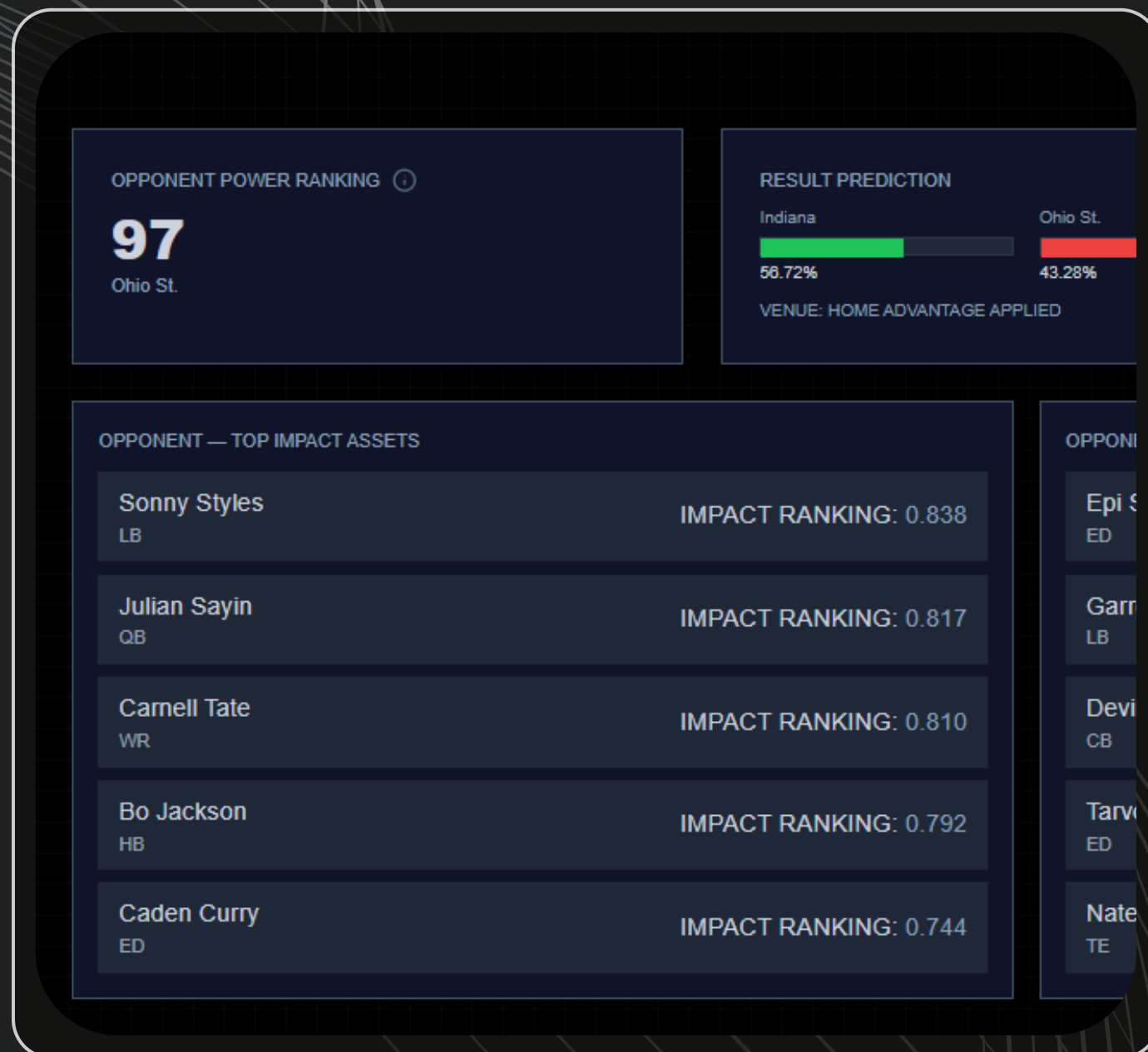
Reduce risk when
making high impact
recruiting moves

04

Support objective discussions
across the staff

Opponent Scouting

Turn opponent data into actionable scouting insights



Why ImpactCap?

ImpactCap delivers the most value during high-pressure moments.

When ImpactCap Wins the Most:

- Portal windows
- Roster turnover
- Budget allocation decisions
- Weekly opponent preparation

One Bad Recruiting Decision Can Cost:

- Hundreds of thousands of dollars
- A scholarship slot
- Staff time
- Competitive momentum

See how ImpactCap fits your program

Schedule a guided demo and walkthrough a real recruiting or portal use case.

Contact

beau@dsa-labs.com
support@dsa-labs.com

See it in action:

- Walkthrough real roster or portal scenarios
- See how multiple tools collapse into one workflow
- Understand how decisions get clearer, faster

Book a demo:



Our Team

DSA Labs, short for Developmental Sports Analytics, is a forward-thinking software company revolutionizing sports data management and analysis. Designed for coaches, players, and scouts, our flagship platform, StatLink, combines a sophisticated statistical inference engine with a simple, easy-to-use interface. It leverages multiple sources of data to address some of the biggest coaching challenges, including talent identification, forecasting player ability, making line-up decisions, performing personality assessments, and ultimately, predicting game performances.



Chip Krotee, MBA

Co-Founder West Point
Soccer Alumni Duke MBA
20+ Years Wall Street



Dr. Jon Nichols, PhD.

Co-Founder and Director of Analytics
UDel Soccer and Track Alumni Duke PhD
Mechanical Engineering
100+ Publications in Probabilistic Models



Scott Krotee, MIM

Head of Product
GWU Soccer Alumni
SJU MIM International Marketing
Former Professional Gokeeper
Former D1 Soccer Coach



Beau Corrales

Head of Football and Director of Sales
UNC and SMU Football Alumni
Performance Coach