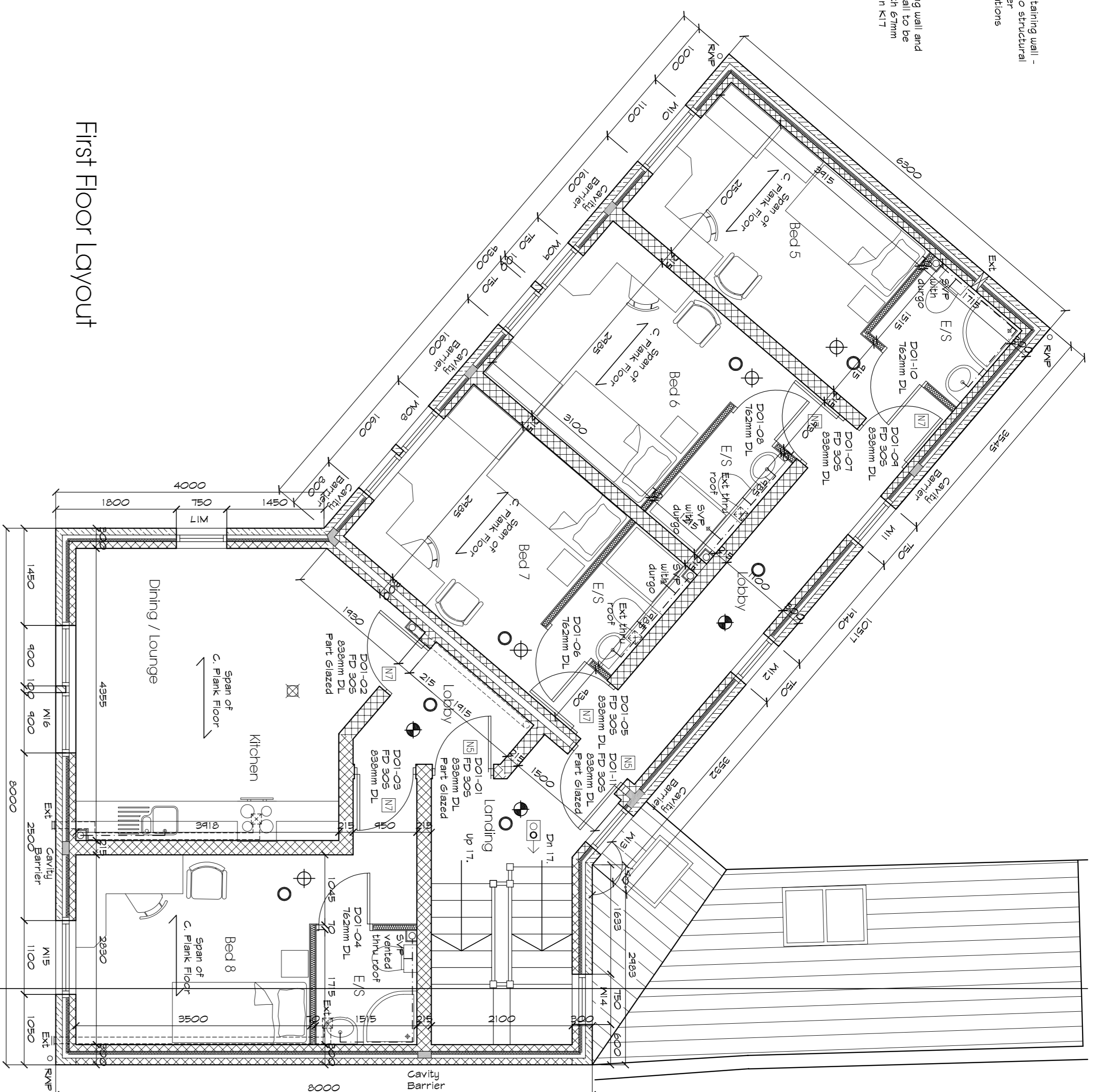
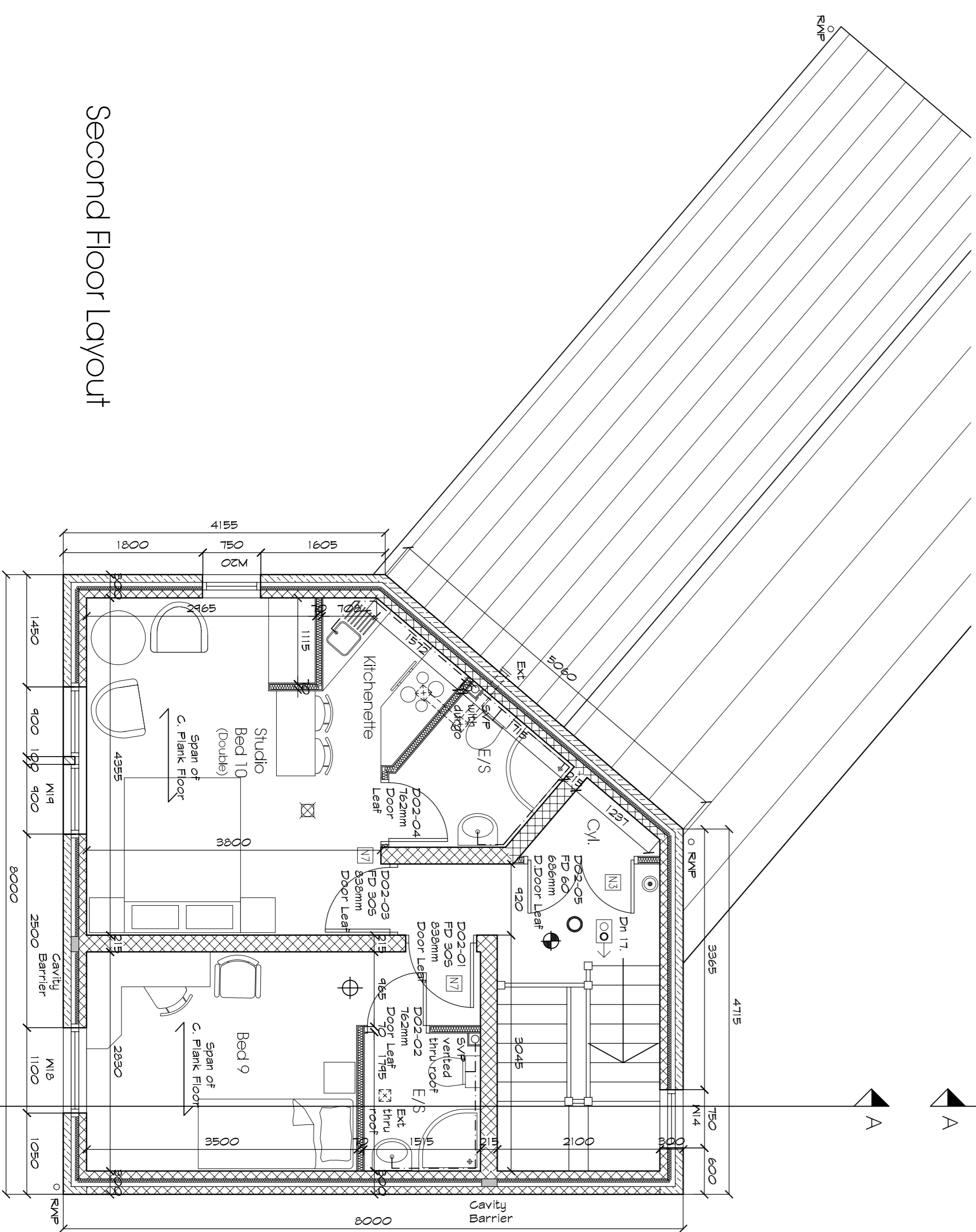


Ground Floor Layout



First Floor Layout



Second Floor Layout

KEY TO FIRE DETECTION SYMBOLS	
FD305	1-Hour Fire Resistant self closing door with intumescent strips and smoke seals interconnected
⊕	Smoke alarm - mains powered and interconnected
⊕	Smoke alarm - mains powered (Not required to be interconnected)
⊗	Heat Detector - mains powered and interconnected
N3	Notice on door - THIS DOOR TO BE KEPT LOCKED SHUT WHEN NOT IN USE
N5	Notice on door - FIRE EXIT - KEEP CLEAR
N7	Notice on door - FIRE DOOR - KEEP SHUT
IP	Fire alarm indicator panel
⊙	Fire alarm call point
⊕	audible warning device
⊕	visual warning device
⊕	emergency assistance call point
⊕	emergency light point
⊕	illuminated exit sign
⊕	illuminated exit sign - directional
⊕	Fire extinguisher - water type
⊕	Fire extinguisher - foam type
⊕	Fire extinguisher - foam type
⊕	Fire extinguisher - dry powder
⊕	Fire blanket
⊕	alarm sounder
⊕	Beam detectors

Key	
Ext	Extract Fan
RWP	Rain Water Pipe
SVP	Soil Vent Pipe
S/G	Safety glass
BIG	Back inlet gully
OB5	Obscure glazing
Notes	
All dimensions are to structural elements and discount plaster	
All Door sizes are door leaf dimensions and not structural dimensions	
Separating walls are to be taken up to the underside of the roof and fire stopped	
100mm glass fibre insulation quilt to roof space laid between ceiling joists with additional layer min 200mm th. laid over ceiling joist.	
All electrical work is required to meet the requirements of Part P and be designed, installed, inspected and tested by a person competent to do so	

Rev B - Single Storey Rear Cycle Store extended
 Rev A - Lobby's added to bedrooms 4, 9 and Kitchens
 REVISIONS
 Student Accommodation
 at 45 Almondbury Bank
 Moldgreen
 Huddersfield
 for R. Armitage
 Proposed Plans
Farrar Bamforth Associates Ltd.
 Chartered Architectural Technologists
 51, Trinity Street, Huddersfield, HD1 4DN
 Tel: (01484) 424008 Fax: (01484) 512305
 E-mail: design@farrarbamforth.co.uk
 Website: www.farrarbamforth.co.uk
 Drawn: S/G
 Date: Feb 2013
 Scales: 1:50 @ A1
 Drawing No. 12/D73/06 REV: B

New retaining wall - engineer refer to structural calculations

retaining wall and store wall to be kept in place Kingpan K17